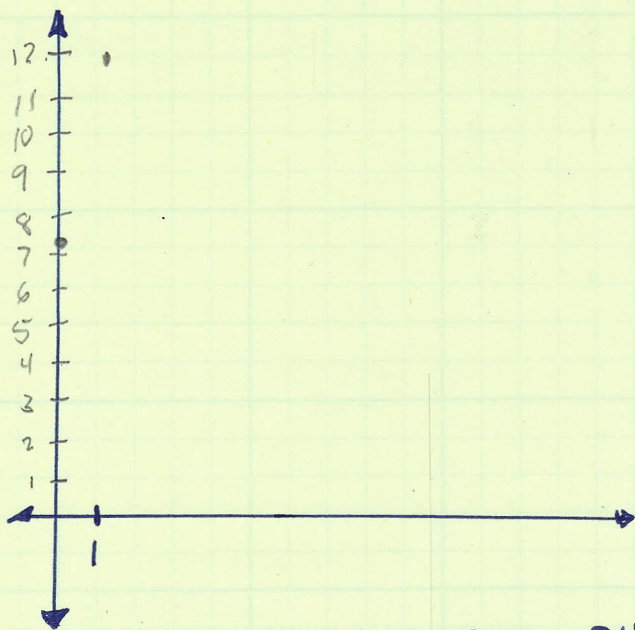


2.1 page 69 # 48



ABOUT HOW MANY FEET DID Phillip walk?

$$(12 - 7.25) + 1.25$$

$$4.75 + 1.25 = \frac{6 \text{ unit}}{1 \text{ unit}} \mid \frac{50 \text{ feet}}{1 \text{ unit}} = \underline{\underline{300 \text{ feet}}}$$

HE CAN'T WALK THROUGH WALLS,

Sec 2:2 page 76 #44

#44. What was the average rate of change in percent of male workers?

$$\frac{17.4\% - 9.6\%}{1988 - 1971} = .709\% = \underline{\underline{.71\% / \text{Year}}}$$

Sec 2,3 page 82 #44

~~2.75P + 1.5S = 1000~~

44. Write a model that shows the different numbers of subs and pizzas the band has to sell to = \$1000.

$$\boxed{\$2.75P + \$1.5S = \$1000}$$

2.4 page 91 # 30

30. Write a model for average cost.
Let $t=0$ represent 1980 and estimate
the cost of running the IRS in 1995.

$$C = \frac{5.5 - 2.3}{90 - 80} t + 2.3$$

$$\underline{C = .32t + 2.3}$$

$$C = .32(15) + 2.3$$

$$\underline{C = \$7.1 \text{ Billion}}$$