

PRE - Algebra - Review 3, LESSONS 15-22

SOLVE FOR THE UNKNOWN.

1. $\frac{1}{4} = \frac{16}{x}$

2. $\frac{9}{y} = \frac{9}{8}$

3. $\frac{8}{19} = \frac{x}{7}$

FIND THE LCM FOR EACH PAIR OF NUMBERS.

4. 4 and 6

5. 8 and 20

6. 13 and 65

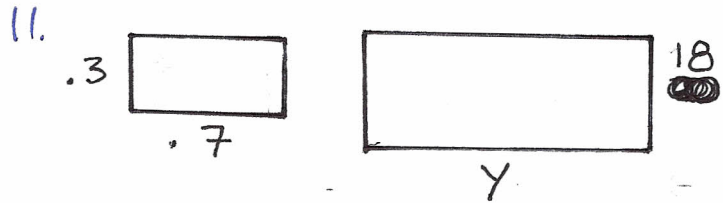
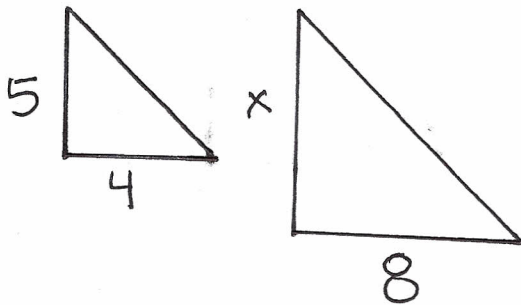
FIND THE GCF FOR EACH PAIR OF NUMBERS.

7. 12 and 13

8. 15 and 25

9. 8 and 14

WRITE A Proportion ~~set~~ FOR EACH SET OF SIMILAR POLYGONS. SOLVE FOR THE UNKNOWN SIDE.



12. A Room is 12 feet long, 13 feet wide and 8 feet high. How many square feet must be covered if the walls, ceiling and floor are all to be painted?

13. What is the surface area of a pyramid with a square base measuring 7' on a side if the face height is 10 feet?

14. The temperature in Victoria's backyard is 5°C . Give the temperature in Fahrenheit.

2/2

15. If the temperature is 62°F , what is the temperature in Celsius?

16. Simplify and write without the absolute value sign.

$$|4 - 8^2 + 3| - |7| =$$

17. $4 + 1.082 =$ 18. $5.98 - 2.37 =$

19.
$$\begin{array}{r} 8.2 \\ \times 1.6 \\ \hline \end{array}$$

20.
$$\begin{array}{r} .007 \\ \times .92 \\ \hline \end{array}$$

21. $6 \overline{) 3.8}$

22. $.04 \overline{) .092}$